

Mobile screen

Metso Lokotrack® ST2.3™



Get the  
job done



Lokotrack ST2.3

metso

**Dependable screening power**

**Metso Lokotrack® ST2.3**

Metso Lokotrack ST2.3 provides you the tools to expand and enhance your contracting business. Its robust design, high quality parts and durability allow you to tackle a variety of different tasks and projects, regardless of the material that needs screening.



# Reliable, efficient, easy-to-own



## The best screening performance in its class

- Widest screen (1.5 m/5') in its class with matching feeder and conveyors
- Up to 13 mm aggressive stroke with 5G acceleration
- Suitable for different applications from heavy duty scalping to recycling and fine screening

## Reliability every step of the way

- Robust Lokotrack design based on decades of experience
- High quality premium parts/components
- Broad Metso network ensures availability of support and spare parts

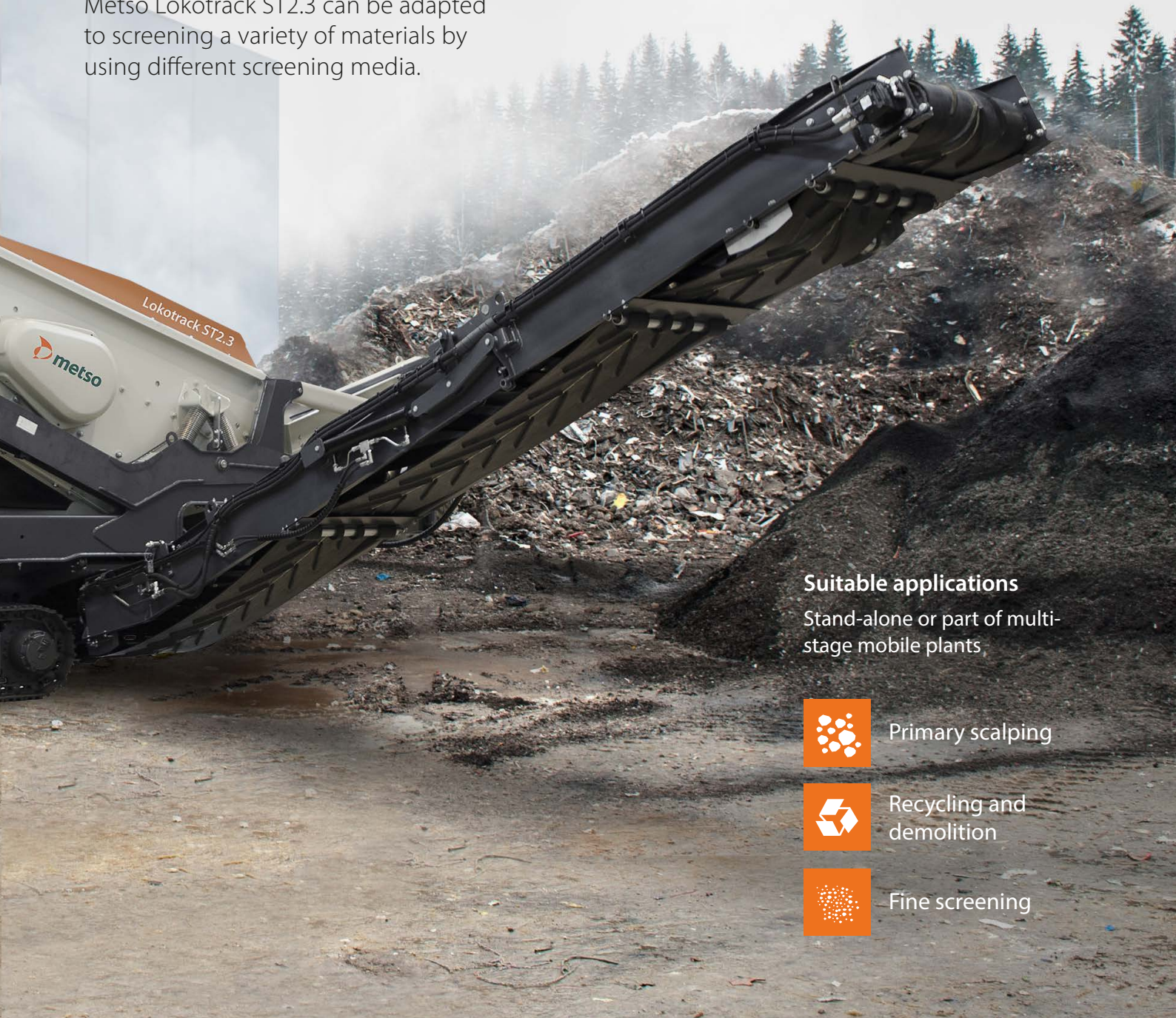
## Easy-to-own machinery

- Compact size and hydraulic functions for easy transport
- Simple to use display
- Easy access maintenance
- Standard parts



## Multi-use unit suitable for different applications

Metso Lokotrack ST2.3 can be adapted to screening a variety of materials by using different screening media.



### Suitable applications

Stand-alone or part of multi-stage mobile plants,



Primary scalping



Recycling and demolition



Fine screening

# Metso Lokotrack® ST2.3™

## Mobile screen

### Technical details

#### H12-4 Belt feeder

Hopper Volume 5 m<sup>3</sup> (6.5 yd<sup>3</sup>)  
Max feed size 400 mm (16")  
Loading Width 2300 mm (7' 6")  
Loading Height 2500 – 3000 mm  
(8' 2" – 9' 10")

#### Screen

Size 3000 × 1500 mm (10' × 5')  
Area 4.6 m<sup>2</sup> (5.5 yd<sup>2</sup>)  
Screen stroke Up to 13 mm  
Acceleration 5G  
Variable Inclination 13° – 23°

### Compact transport size



#### Transport dimensions

Weight 17 000 kg (37 500 lbs)  
Length 11 950 mm (39' 4")  
Height 2 550 mm (8' 5")  
Width 2 280 mm (7' 6")



#### H12-5 Oversize conveyor

Discharge height  
~3000 mm (9' 10")

#### H6.5-7 Side conveyor

Discharge height  
~3000 mm (9' 10")

#### H6.5-8 Side conveyor

Discharge height  
~3000 mm (9' 10")

#### Engine

CAT® C3.6 55 kW  
Stage V / Tier 3

### Examples of available options

Different screen medias (grizzly, punch plate, finger grizzly, steel mesh), Interchangeable meshes between decks, Extended feeder with grid for wheel loader, Radio remote control, Climate kits, Two-way split configuration, Lights, Hydraulic folding for feed hopper extensions, Metso Metrics.

Learn more at



[metso.com/products/screens/mobile/st2.3/](https://metso.com/products/screens/mobile/st2.3/)

Find your local Metso sales team  
or distributor



[metso.com/contacts](https://metso.com/contacts)



Metso Corporation,  
Lokomonkatu 3, P.O.Box 306,  
FI-33101 Tampere, Finland,  
tel. +358 20 484 142  
[www.metso.com](http://www.metso.com)

Copyright © 2019 Metso Corporation. 3896-03-19-EN-AGG. All trademarks and registered trademarks are the property of their respective owners. The information in this document is provided as is without warranty of any kind, either express or implied, including but not limited to the implied warranties of merchantability, fitness for a particular purpose or non-infringement and for informational purposes only. In no event shall Metso be liable to any party for any direct, indirect, special or consequential damages arising out of, caused in connection with or due to any use of the information in this document. Information in this document may include inaccurate information or information which has not been updated. Metso has the right to make changes in the document without notice. Not all products or services are available in all countries.